

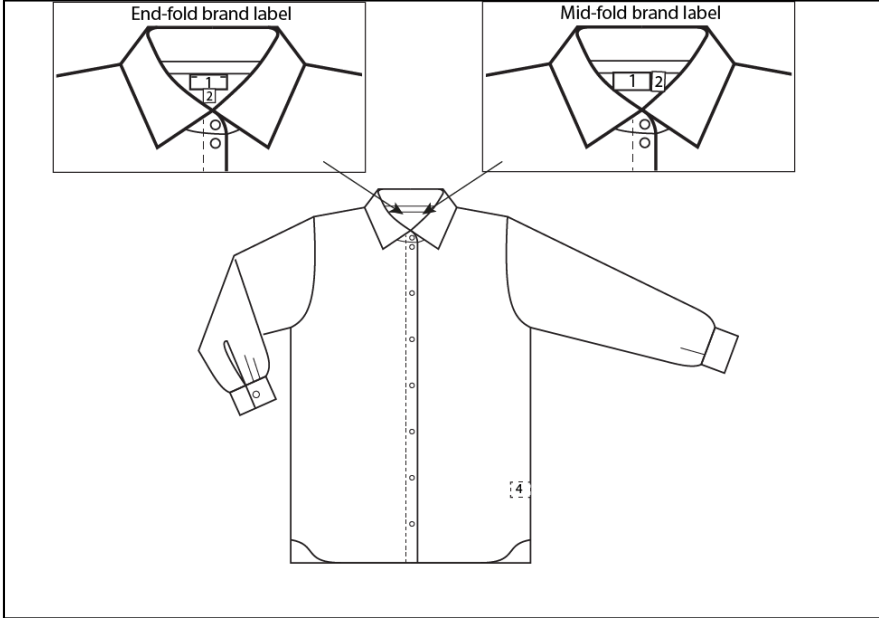
# 6.2 Labelling position

---

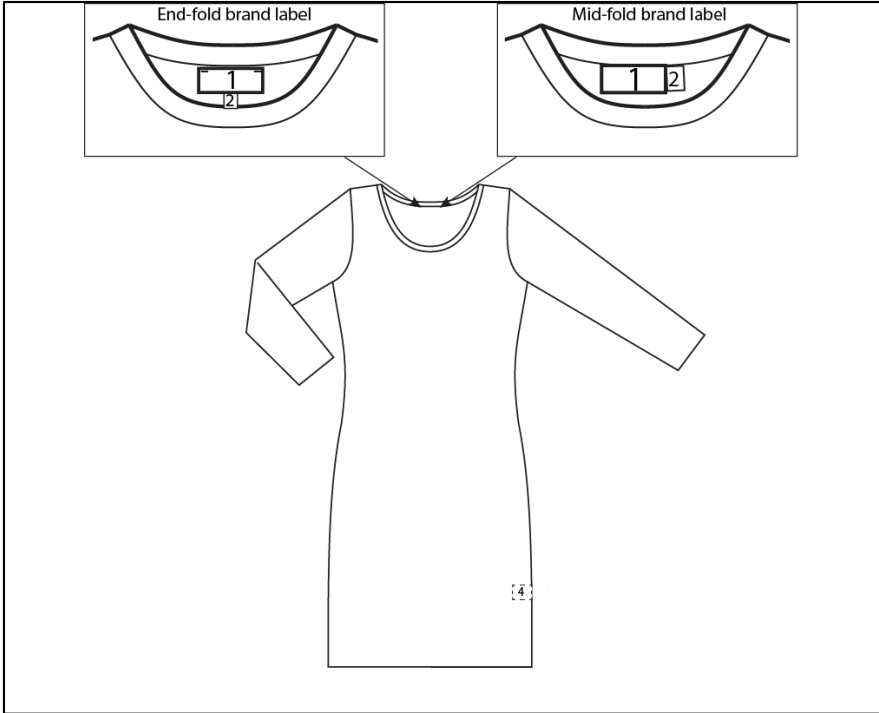
## 6.2.1 Tops

---

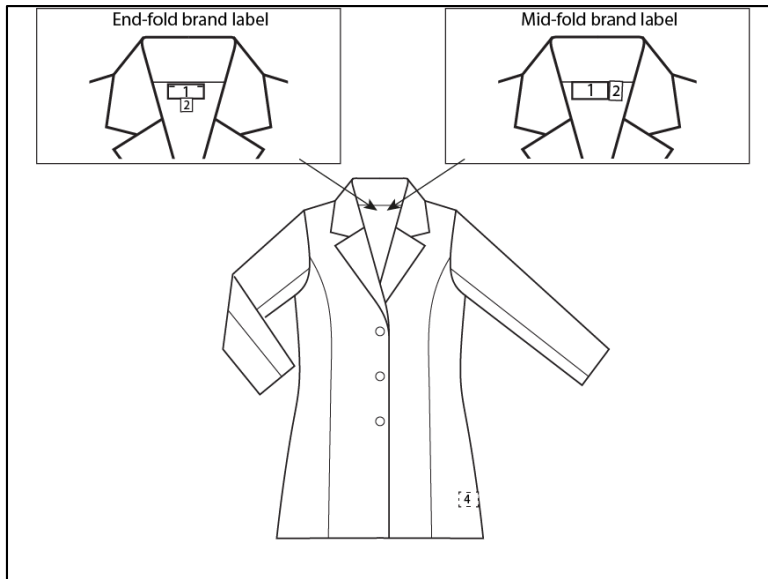
### 6.2.1.1 Blouse/ Shirt



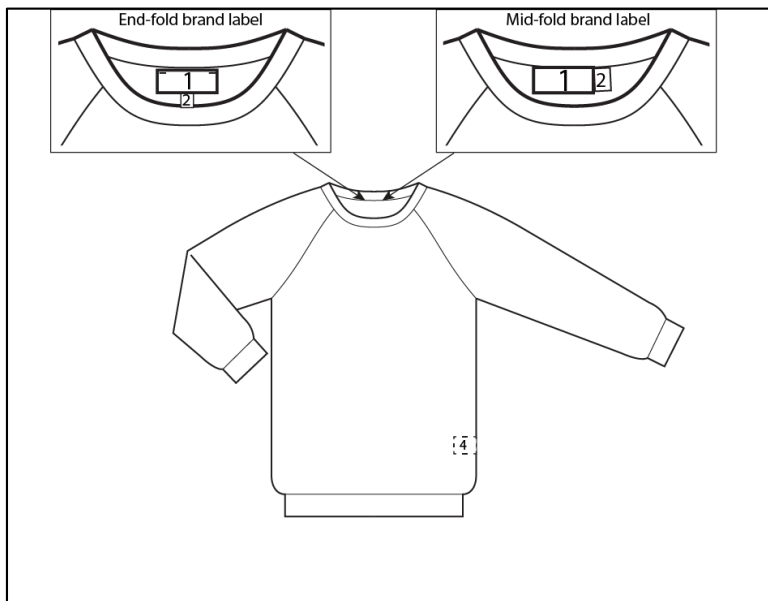
### 6.2.2.1 Dress



### 6.2.1.3 Coat/ Jacket



### 6.2.1.4 Pullover



#### **Label 1 Brand Label:**

- End-fold label attached at CB, below edge or seam, with 2 small bartack at the top corners.
- Mid-fold label attached at CB with top edge incorporated within seam.

#### **Label 2 Size Label:**

- Attached at bottom of end-fold brand label or attached at right side of mid-fold brand label.

#### **Label 3 Hangtag:**

- Attached with pin to bottom of brand label (centered). Pin will be delivered with hangtag.

#### **Label 4 Care Label:**

- Attach in left-hand side seam of item (approx. 15 cm. from lower edge in case of top item and approx. 15 cm. from waist in case of bottom item).